

# Livestock & Fish CRP

**Accelerating research to impact for pro-poor transformation of selected value chains to produce more meat, milk and fish:**

- **For the poor:** will there be sufficient affordable animal-source foods on the table of the poor to 2050 for healthy diets?
- **By the poor:** can we demonstrate that smallholders and the poor —and especially women-- can contribute to and benefit from producing and delivering a share of that food?

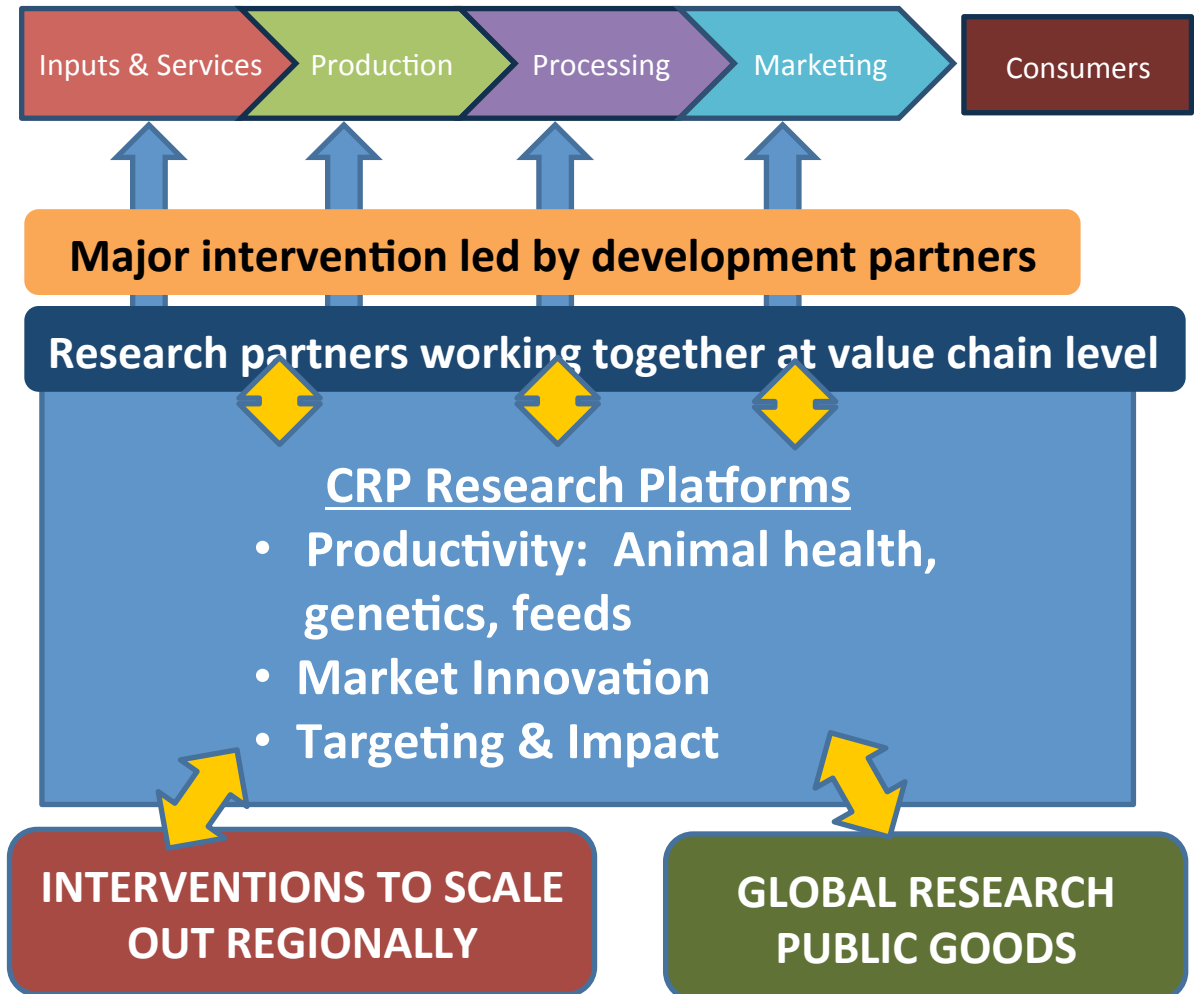
# Urgency and focus for relevant research by considering the whole value chain

**Aiming our research to transform selected pro-poor value chains**

**Focusing research to design and generate evidence for large-scale development interventions**

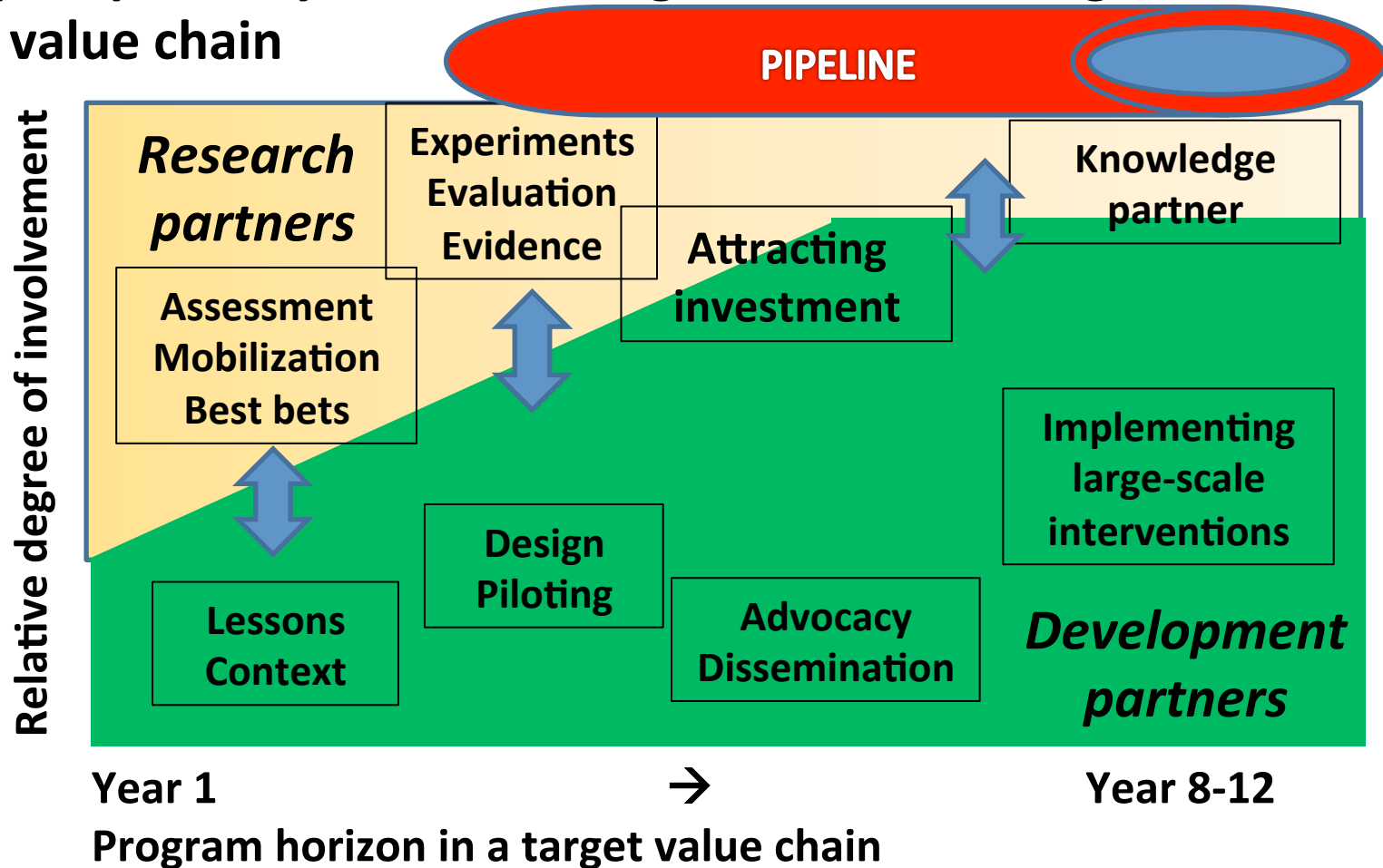
**Prioritizing an appropriate balance of short and long-term research on the productivity drivers and social science**

**For local solutions but with regional and global benefits**



# Recognizing and harnessing the roles of research and development

Stylized impact pathway for translating research into large-scale impact in a value chain



In 9 meat, milk and fish value chains, and through other CRPs and their sites

# Focus, focus, focus!

Working in 9 target value chains → *accountability*

